

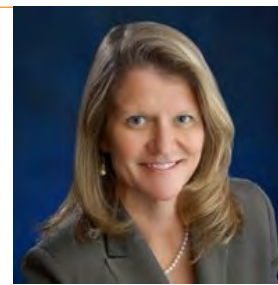


# Sandoval Economic Alliance Community Overview



## New Mexico Familiarization Tour

Wednesday, May 1-3, 2024 | Hotel Encanto | Las Cruces, NM



**Deborah Breitfeld, CEcD**  
Sandoval Economic Alliance  
Business Development Director

# Overview

*Sandoval County at-a-glance*

## **Albuquerque MSA – 967,000**

- Annual Growth Rate – 1.5%
  - 9% > since 2010
- Median Household Income – \$83,639

## **Sandoval County Population – 158,275**

- Annual Growth Rate – 1.5%
  - 19.51% > since 2010
- Median Household Income – \$83,639

## **City of Rio Rancho Population – 104,351**

- Annual Growth Rate – 1.69%
  - 19% > since 2010
- Median Household Income – \$85,374

## **Utilities**

- Electric: Public Service Company of NM
- Gas: NM Gas Company
- Water: City of Rio Rancho

## **Transportation Infrastructure**

- Highway: 528 & 550
- Airport: Albuquerque Int'l Sunport (30 minutes)



# Top Industries

*Major Employers and Assets*

- One of the fastest growing county in NM
- Low crime rate
- Excellent educational system
- Educated workforce
- Local LEDA opportunities
- Pro-business & award-winning community
- Arts & Culture –
  - 14 Native American pueblos & tribes
- Hyatt Tamaya Resort & Spa
- Outdoor recreation



**2,100 Employees**



**BANK OF AMERICA**  
Client Service Center

**330 Employees**



**185 Employees**



**650 Employees**



**U.S. COTTON®**

**250 Employees**



**117 Employees**





# Workforce

## About our workforce

Sandoval County pulls labor from the Albuquerque MSA region:

- Available Labor Force 397,846 (30-minute commute from Rio Rancho)
- Educated Workforce
  - 23% Some College
  - 30% Bachelors or Associates Degree
  - 14% Postgraduate Degree
- Diverse Population
  - 38% Caucasian
  - 48% Hispanic
  - 5% Native American
  - 9% Other Ethnicity
- RRPS CTE Program
  - Collaboration with Central NM Community College

Sources: JobsEQ 2022, Q3 American Community Survey, Census April 1, 2020 Data, DATA USA



30-Minute Commute Time (397,846 Available Labor Force)

# Success Stories

## Intel NM

- Advanced semiconductor packaging technologies manufacturer.
- Since 1980 - total investment of more than **\$17 billion**.
- About **1,100** employees in 2017; **700** new jobs in 2018.
- In 2021, **\$3.5 billion** expansion adding another 700 high-tech jobs, and **3,000** construction jobs. Currently over **2,100** employees.
  - Only US factory producing advanced packaging solutions.
  - Update and optimize the **350,000 SF Fab 11 and Fab 11X**.
  - Revive **70,000 SF Fab 9** for **Foveros**, Intel's breakthrough 3D chip-stacking technology.

### Investment:

\$3.5 billion

### Jobs Created:

700

### Industry:

Advanced Semiconductor Manufacturer

### Location:

Rio Rancho, NM

### Facility Size:

Modernize Fab 11 & 11X  
- 350,000 SF  
Revive Fab 9 – 70,000 SF

### Highlight:

Since 1980



# Success Stories

## Intel NM

- Incentive Package – SEA collaborated with the state and local municipalities on:
  - Industrial Revenue Bonds
  - NM GRT Share (50/50) on Construction costs – approximately **\$14M**
  - LEDA - **\$5,750,000** from State of NM, Sandoval County & City of Rio Rancho
  - Job Training Incentive Program – received **\$6,254,620** to train 550 employees ~average wage \$44.50/hour in January 2024. On the agenda for May.

*"Intel has received tremendous assistance from Sandoval Economic Alliance (SEA) including employee recruitment, incentive negotiations with the State, Sandoval County, and the City of Rio Rancho. Additionally, SEA has been one of our biggest champions within the community and state."*

Erika Edgerly, Director of Capacity & Product Planning  
Intel Foundry Services

## Intel Opens Fab 9 in New Mexico



*Intel leadership, Governor Michelle Lujan Grisham, and local/statewide leadership. January 2024*

# Opportunities

*Discover your next expansion opportunity*



- Rio Rancho City Center

- 70+ acres
- Rio Rancho Events Center
- City Hall
- HP
- Campus Park – upcoming expansion
- Bioscience Silver-level Site Readiness Certification
- Targeting office and bioscience industries.



- UNM Rio Rancho Research Park

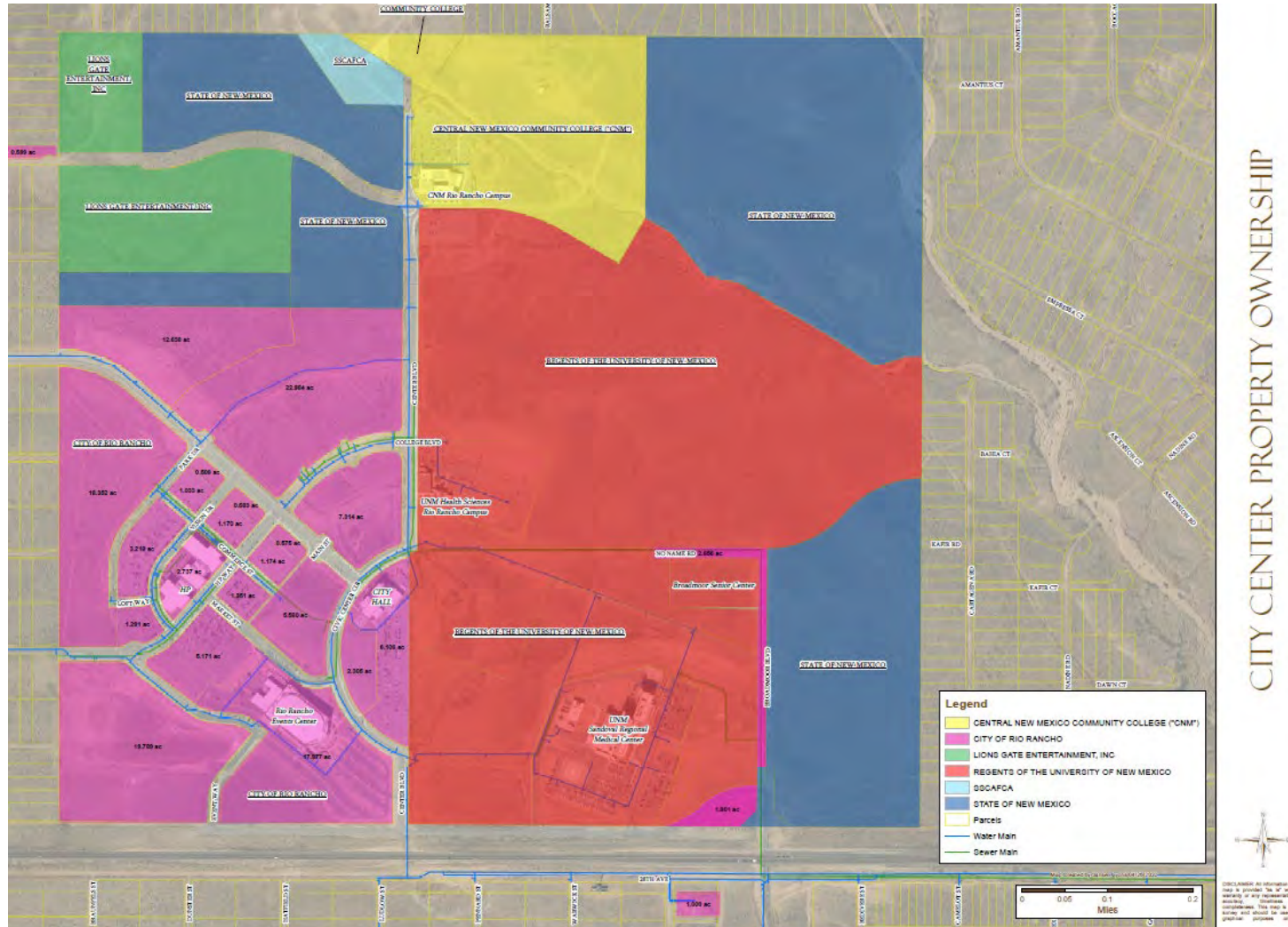
- 180 acres
- UNM Health Sciences Rio Rancho Campus
- Sandoval Regional Medical Center
- UNM Center for Excellence in Orthopaedic Surgery & Rehab
- Bioscience Silver-level Site Readiness Certification
- Targeting bioscience research and development.





# Opportunities

City Center and UNM Research Park





# Opportunities

City Center and UNM Research Park



# Opportunities

*City Center and UNM Research Park*





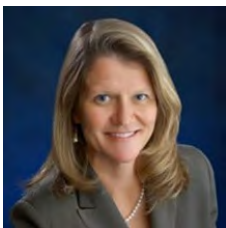
# Opportunities

*City Center and UNM Research Park*








# Questions? Let's talk!



**Deborah Breitfeld, CECd**  
**Sandoval Economic Alliance**  
*Business Development Director*  
Deborah@sea-nm.com | (505) 263-7302

Connect with us  [www.sea-nm.com](http://www.sea-nm.com)

 <https://www.linkedin.com/company/sandoval-economic-alliance/>  
 [www.Facebook.com/SandovalEconomicAlliance](http://www.Facebook.com/SandovalEconomicAlliance)  
 [www.Instagram.com/sandovaleconomicalliance/](http://www.Instagram.com/sandovaleconomicalliance/)