

WELCOME TO GREATER ALBUQUERQUE

New Mexico Familiarization Tour

Wednesday, May 1-3, 2024 | Hotel Encanto | Las Cruces, NM



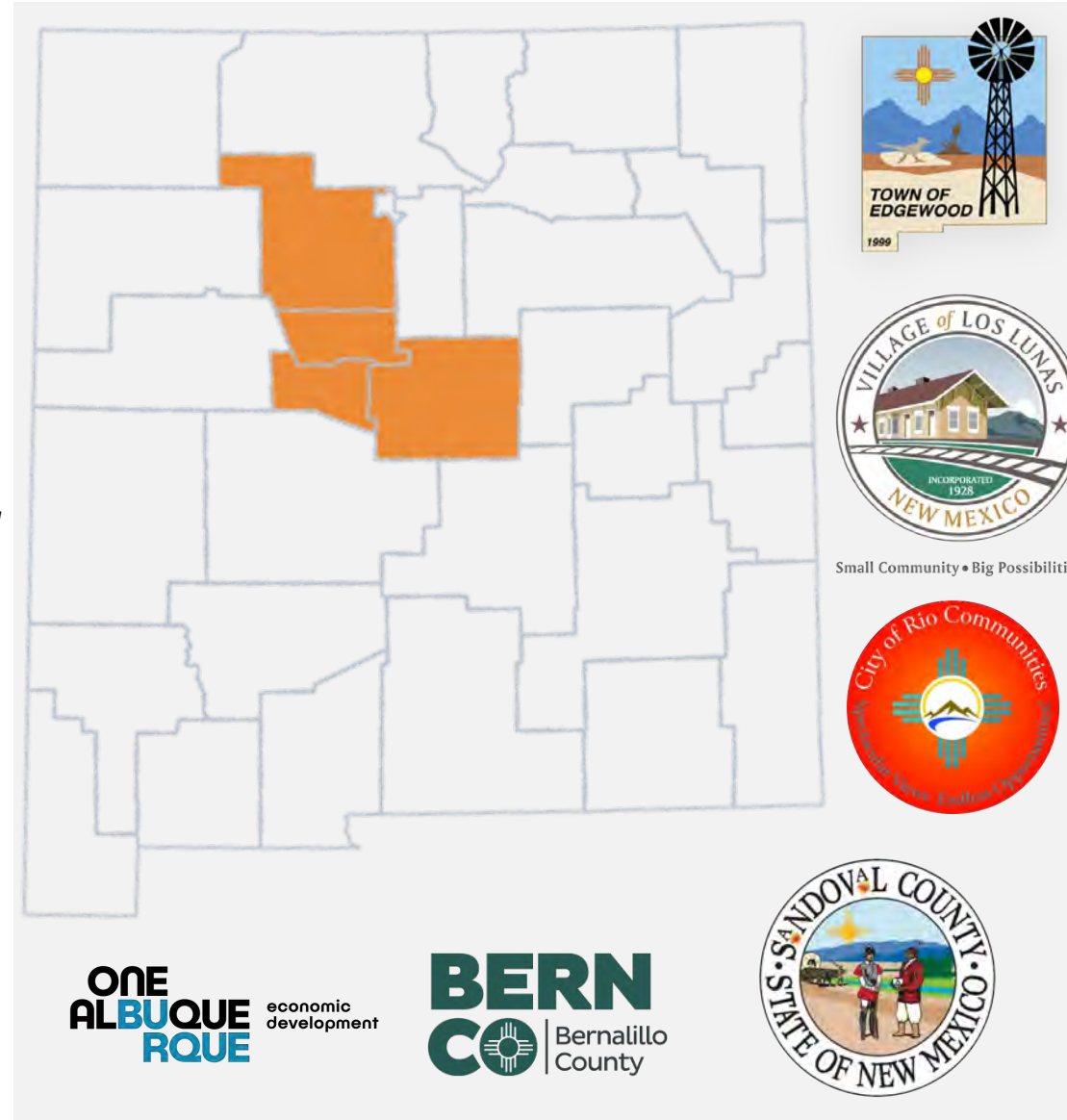
Antonio Granillo

Albuquerque Regional Economic
Alliance (AREA)
Senior Analyst

Overview

Greater Albuquerque at-a-glance

- **City/County/MSA Population – 930,050**
 - Annual Growth Rate – 1.6%
 - Median Household Income – \$68,919
- **Utilities**
 - Electric: PNM
 - Gas: NM Gas Company
 - Water – ABCWUA, Local Municipalities, NM Water
- **Transportation Infrastructure**
 - Highway(s): I-25 & I-40
 - Rail: BNSF Intermodal Facility
 - Airport(s): ABQ International Sunport with 415 flights per day



Top Industries

Major Employers and Assets



23,300 Employees



13,361 Employees



12,105 Employees



3,500 Employees



2,100 Employees



1,000 Employees

Industrial Market At-A-Glance

RIO RANCHO

1 Intel

- Semiconductor Manufacturing
- \$3.5 Billion Expansion (2023)
- 150 Acres (2023)
- 700 Jobs Announced (2021)

SOUTHWEST MESA

2 ABB Installation Products

- Plastics Manufacturing
- Elastimold® Manufacturing & Assembly Plant
- 40 Acres
- 90,000 SF expansion (2023)

NORTH I-25

3 Boeing

- Defense Systems Manufacturing
- 27,000 SF expansion (2024)
- 30 Jobs Announced (2024)

SOUTHEAST HEIGHTS

4 Universal Hydrogen

- Hydrogen Commercial Aviation
- Manufacturing & Assembly Plant
- 50 Acres, 2024 Construction Complete
- 500 Jobs Announced (2023)

5 mtex Antenna Technology

- Satellite AI Panels
- Manufacturing & Assembly Plant
- 70,000 SF
- 62 Jobs Announced (2023)

MESA DEL SOL

6 Maxeon Solar Technologies

- 1st U.S. Expansion
- Manufacturing & Assembly Plant
- 160 Acres
- 1,700 Jobs Announced (2023)

7 Kairos Power

- Nuclear Power Components
- Production & Manufacturing
- 180,000 SF (2023)
- 88 Jobs

VALENCIA COUNTY

8 Arcosa Wind Towers

- Wind Tower Production
- Manufacturing & Assembly Plant
- 250 Jobs Announced

9 Meta

- Data Center
- 4.2 million SF Building
- 750-Acre Campus
- 400 Jobs Announced (2016)



MAJOR ADVANCED INDUSTRIAL EMPLOYERS

Intel
2,100 Employees

**ABB Installation
Products**
500 Employees

**SolAero by
Rocket Lab**
500 Employees

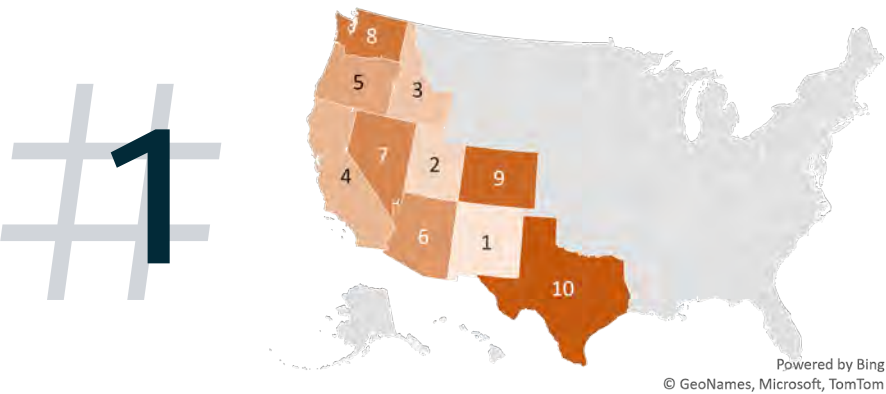
General Mills
200 Employees

**Array
Technologies**
100 Employees

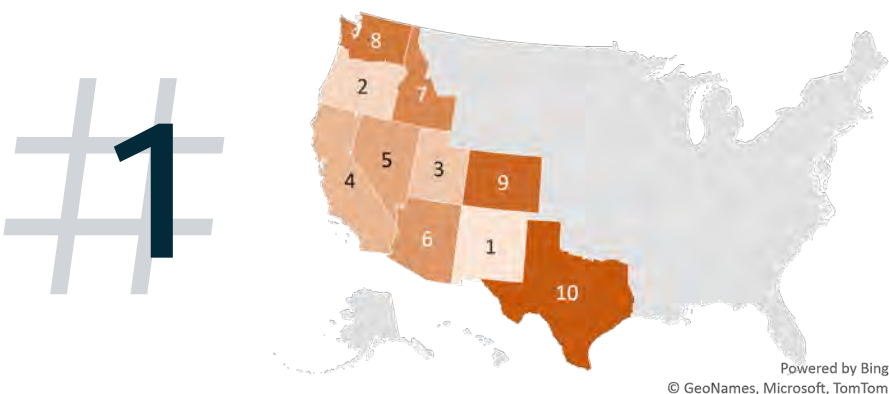
Ranked: Effective Rate By Investment Type

Regional Competitiveness

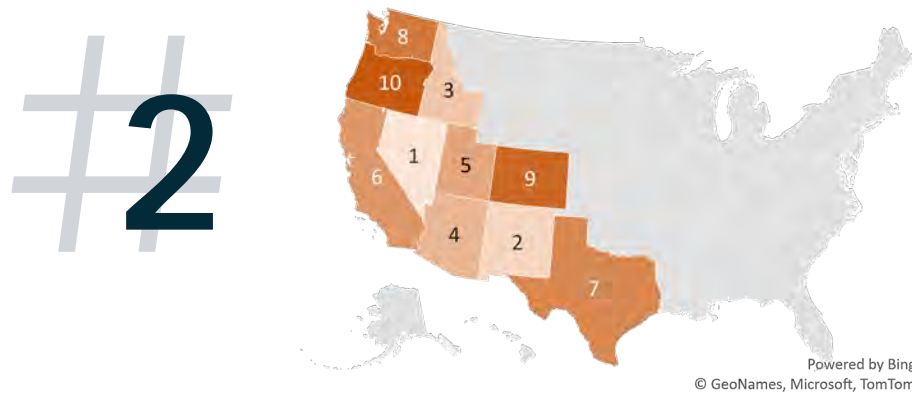
Research and Development



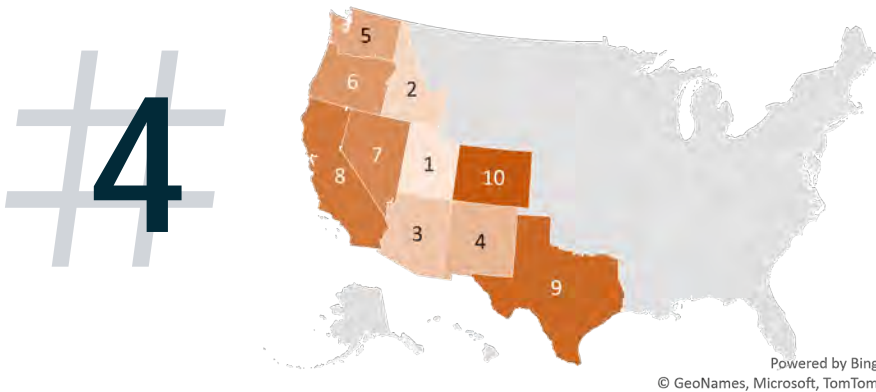
Technology Center



Corporate Headquarters



Capital Intensive Mfg.

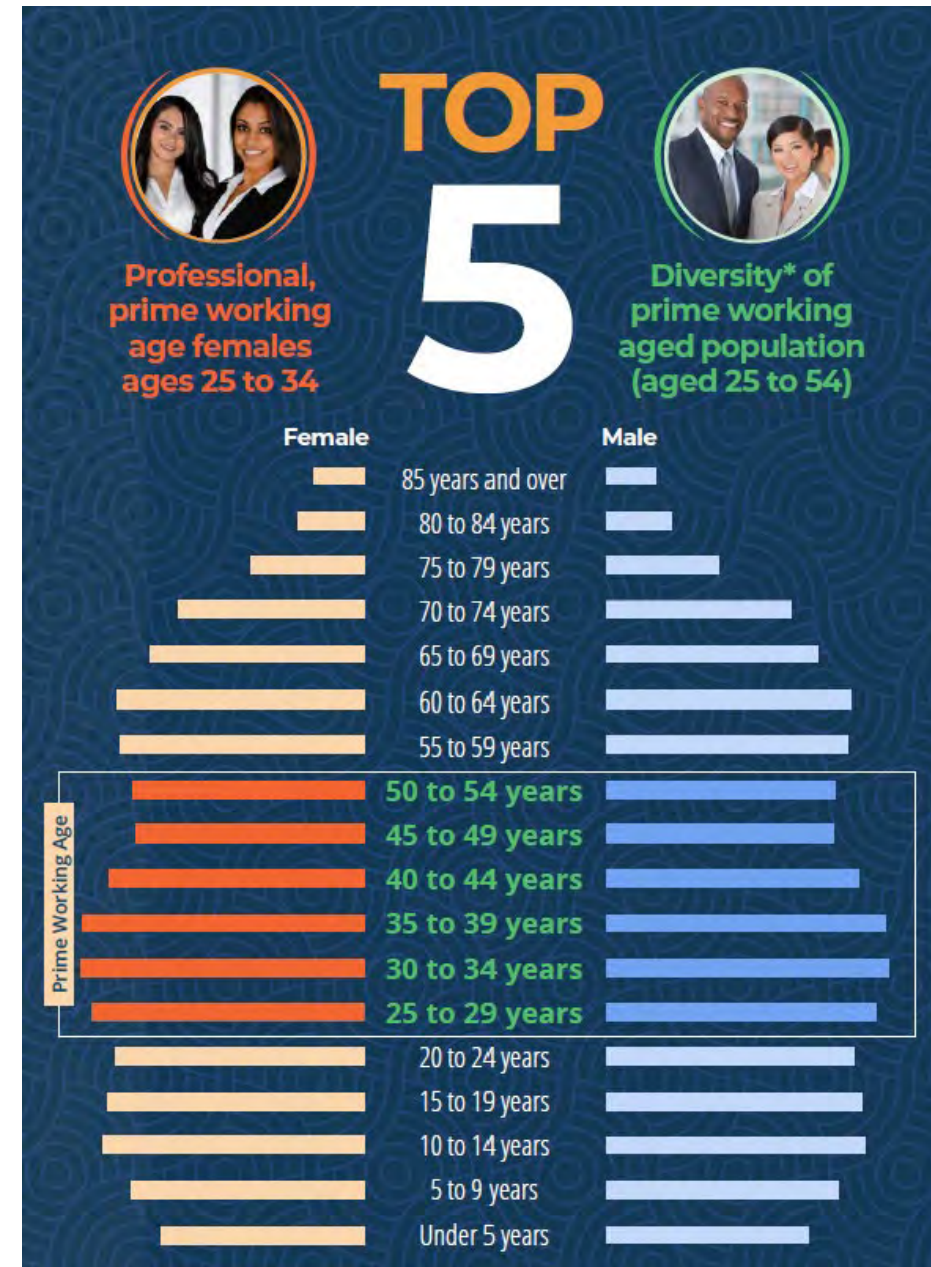
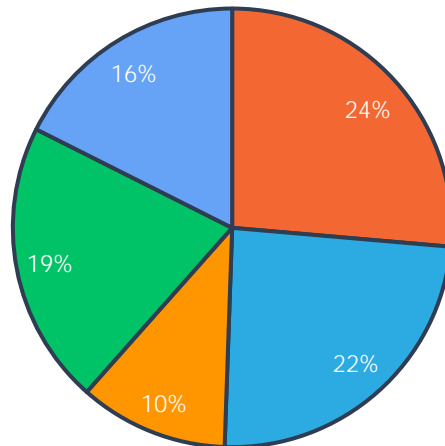


Workforce

About our workforce

- A Diverse Workforce
 - 63% in Greater ABQ vs. 42% Nationally
 - 14.3 % Bilingual in English & Spanish vs. 7.9% Nationally
- Educational Attainment
 - 35.2 % Bachelor's Degree or Higher

- High School Diploma
- Some College
- Associate's Degree
- Bachelor's Degree
- Graduate Degree and Higher



Success Stories

Array Technologies

- Economic Incentives
 - \$49.5 Million Industrial Revenue Bond
 - \$3 Million in Local Economic Development Act Funds
- Location Factors
 - Existing Presence
 - Elected Official Support
 - New Mexico’s Workforce

Investment:
\$49 Million

Location:
Albuquerque, NM

Jobs Created:
405 by Year 3

Facility Size:
216,000 sqft

Industry:
Renewable Energy Mfg.

Highlight:
\$137 Million Economic Impact by Year 3

"To me, [Albuquerque’s growth into a clean energy manufacturing hub] is important because if you think about the next generation of workers, having future-facing jobs is so very important. People are taking notice. You are getting Albuquerque on the map like never before."
 Kevin Hostetler, CEO, Array Technologies



Opportunities

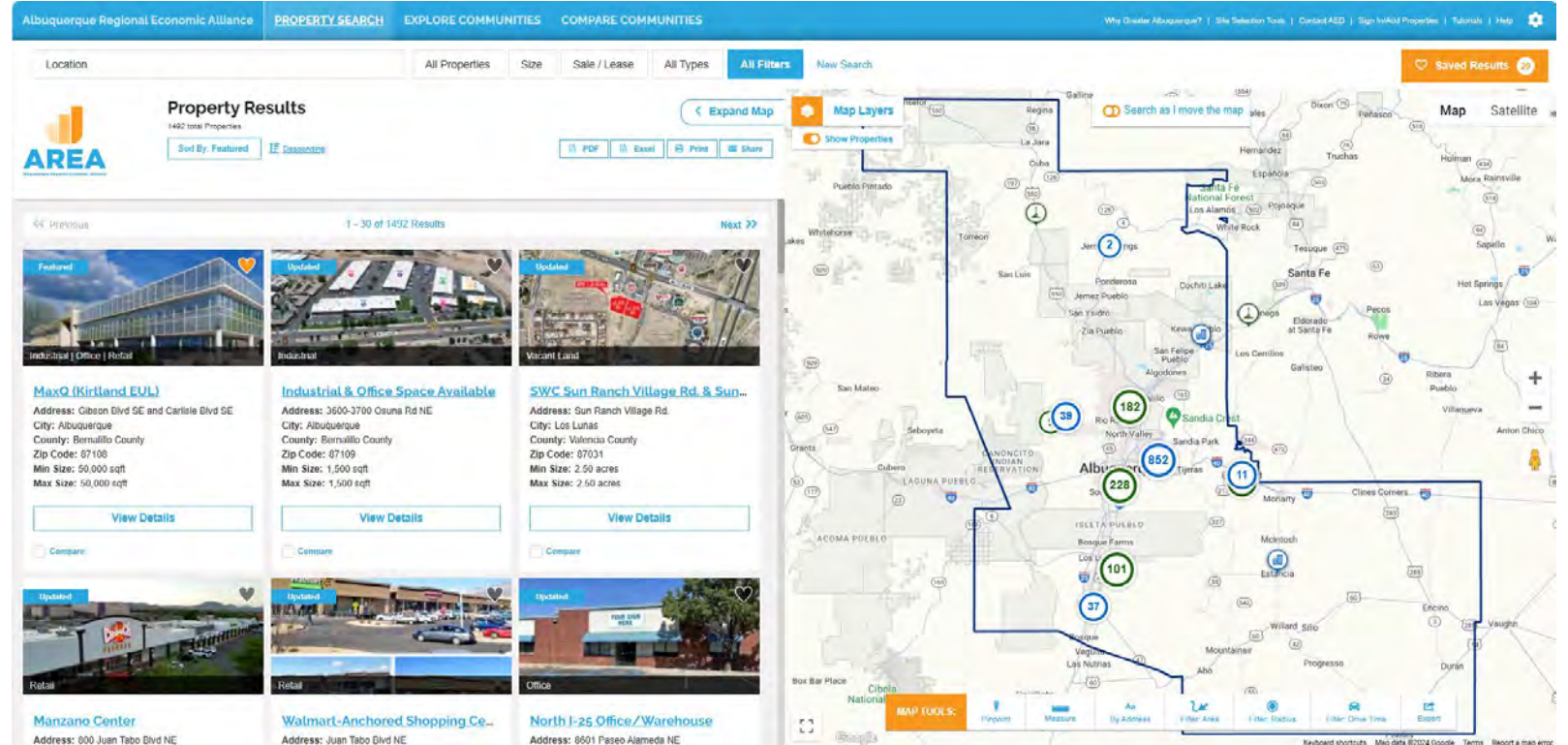
Discover your next expansion opportunity

- Top Sites

- Mesa del Sol
- Central NM Rail Park
- Westpointe 40
- Upper Petroglyphs

- Important Factors

- Interstate Proximity
- Utility Access & Capacity
- Workforce Proximity
- Housing Proximity



The screenshot displays the AREA Property Search website. The top navigation bar includes links for 'Albuquerque Regional Economic Alliance', 'PROPERTY SEARCH', 'EXPLORE COMMUNITIES', and 'COMPARE COMMUNITIES'. Below this, there are filters for 'Location', 'All Properties', 'Size', 'Sale / Lease', 'All Types', and 'All Filters'. The main content area shows 'Property Results' with a grid of six property listings, each with a photo, title, address, and 'View Details' button. To the right of the listings is a map of Albuquerque and surrounding areas, with a blue outline indicating a specific region of interest. The map includes various markers and labels for cities and landmarks.

For a comprehensive list of site and building options, please visit ABQSites.com

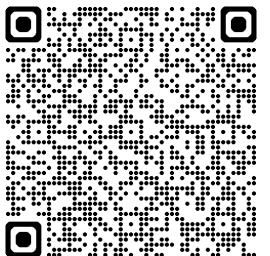


Opportunities

Discover your next expansion opportunity

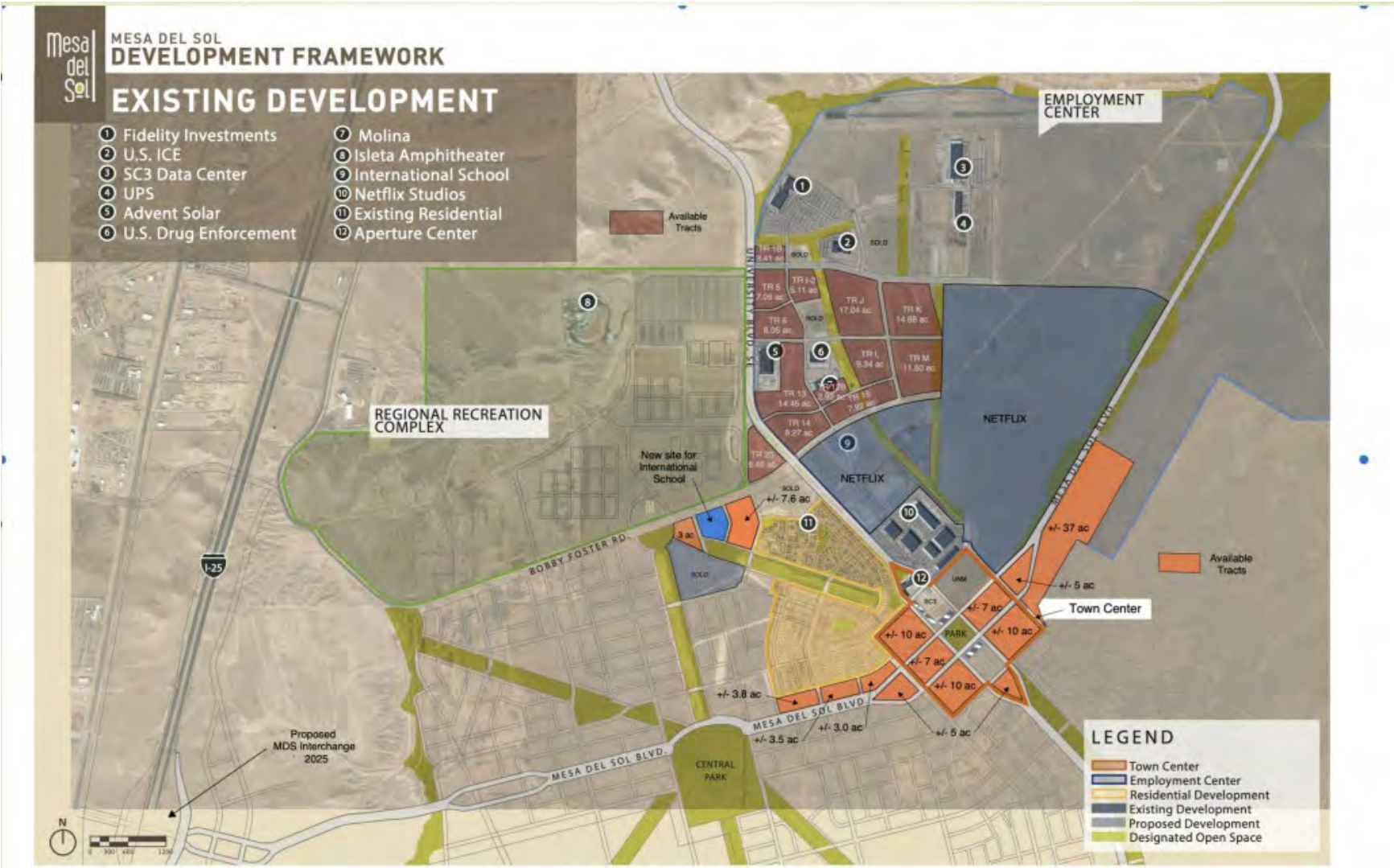


Westpointe 40

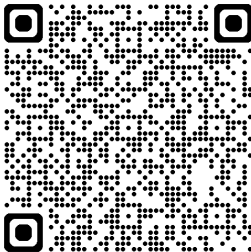


Opportunities

Discover your next expansion opportunity

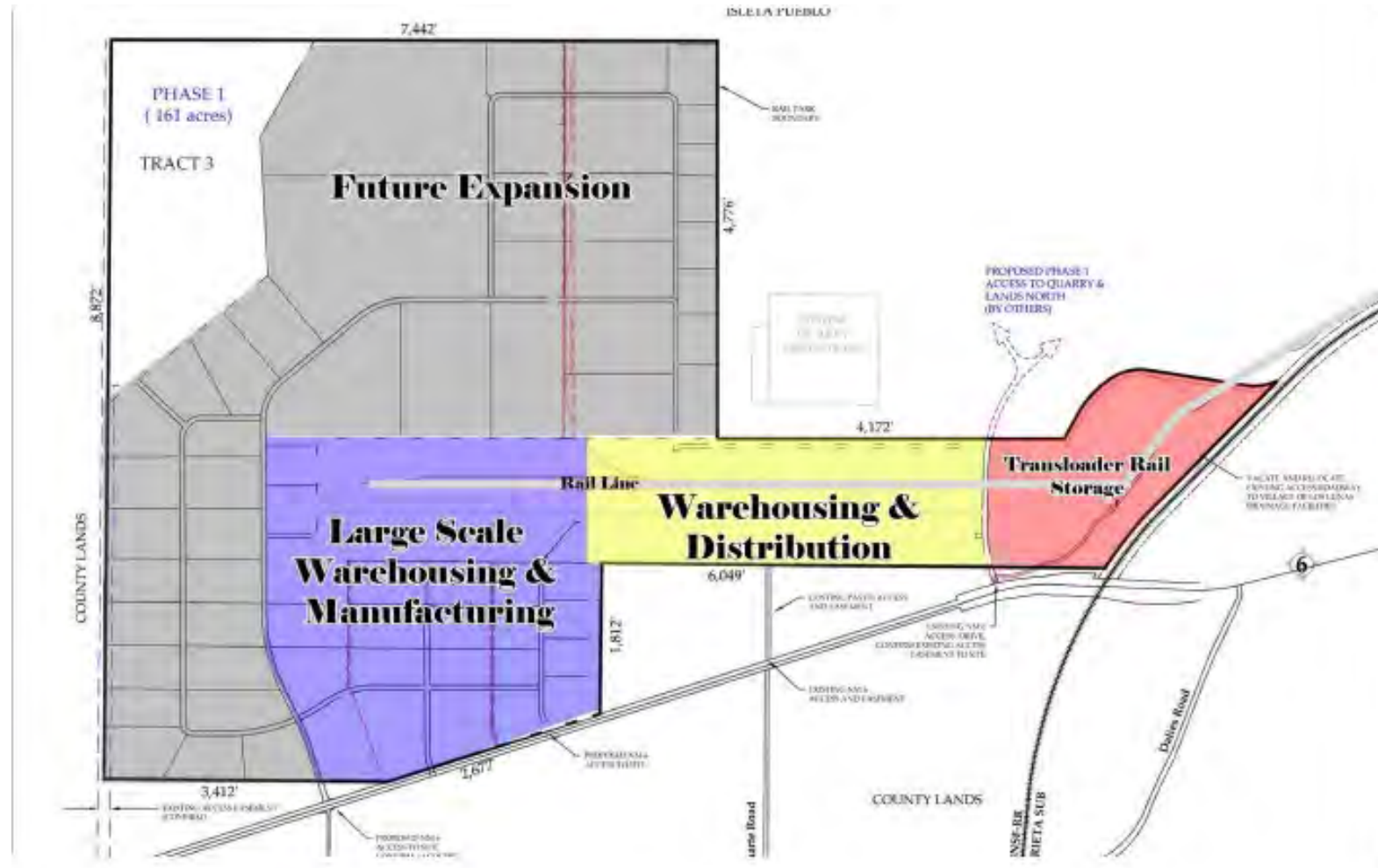


Mesa del Sol

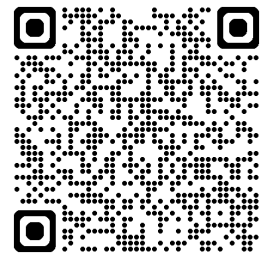


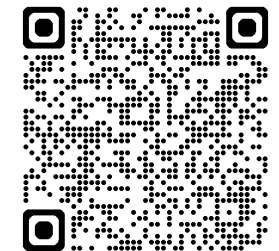
Opportunities

Discover your next expansion opportunity



Central NM Rail Park









Questions? Let's talk!



Antonio Granillo
Albuquerque Regional Economic Alliance
(AREA)
Senior Analyst
agranillo@abq.org | (505) 705-3786

Connect with us  www.Abq.org

 [Albuquerque Regional Economic Alliance](https://www.linkedin.com/company/albuquerque-regional-economic-alliance)  [ABQEconDev](https://www.instagram.com/ABQEconDev)
 [ABQEconDev](https://www.facebook.com/ABQEconDev)  [@ABQEconDev](https://twitter.com/ABQEconDev)