



Cibola Communities Community Overview

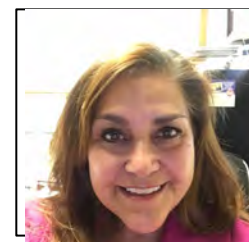
Grants/Milan in Cibola County, NM

BNSF Railway crossing under
Historic Route 66



New Mexico Familiarization Tour

Wednesday, May 1-3, 2024 | Hotel Encanto | Las Cruces, NM

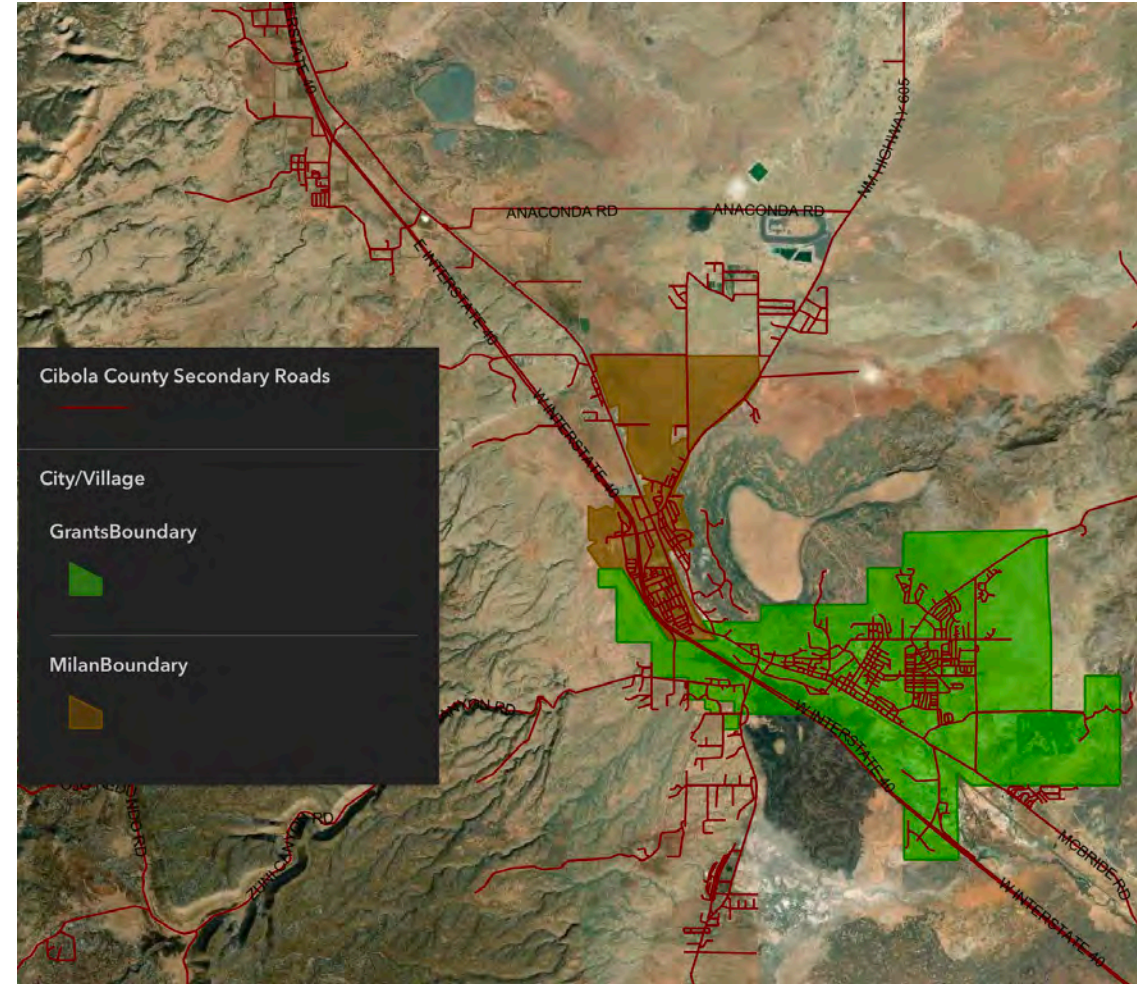


Eileen Chavez Yarborough
Cibola Communities Economic
Development Foundation
Executive Director

Cibola Communities at-a-glance



- **Grants/Cibola/MSA Population – 27,172 (2021)**
 - Annual Growth Rate – 1.95%
 - Median Household Income – \$49,866
- **Utilities**
 - Electric: Continental Divide Electric Coop
 - Gas: New Mexico Gas Company
 - Water – City of Grants, Village of Milan
- **Transportation Infrastructure**
 - Highway(s): Interstate 40
 - Rail: BNSF Railway – double tracked
 - Airport(s): Albuquerque International (1 hr. away) & Grants/Milan Municipal Airports
 - Historic Route 66



Top Industries

Major Employers and Assets

- BNSF Railway – Class 1, transcontinental railway, double tracked
- Interstate 40 – transcontinental interstate
- Grants/Milan Municipal Airport – offering regional flight services and fueling
- Cibola General Hospital - Critical Access Hospital – 25 beds, ER, OR, L&D, Orthopedics, MRI, CT, Lab, Physical Therapy, Wound Care, Behavioral Health, Family Clinic, Acute Care Clinic
- New Mexico State University Grants Campus – Community college providing 2 yr. degrees, vocational & trades programs, career & technical programs



600 employees



District 6

300 employees



230 employees

3
Correctional
Institutions

550 employees



125 employees



Workforce

About our workforce

- Our workforce is diversified in education, skills, and experience.
- We pull from a 100-mile radius for our labor shed.
- In migration = Out migration

Industry by sector for employed population

	Value
Agriculture, forestry, fishing and hunting, and mining	8.5%
Construction	7.8%
Manufacturing	3.6%
Wholesale trade	1.0%
Retail trade	7.4%
Transportation and warehousing, and utilities	2.4%
Information	0.3%
Finance and insurance, and real estate and rental and leasing	2.2%
Professional, scientific, and management, and administrative and waste management services	4.7%
Educational services, and health care and social assistance	23.8%
Arts, entertainment, and recreation, and accommodation and food services	16.9%
Other services, except public administration	6.7%
Public administration	14.7%



Self Employees	11.2%
Private Companies	47.56%
Governmental Workers	33.57%
Not for Profit Companies	7.67%



Average Household Income	\$57,068
Median Household Income	\$49,866
People below Poverty Level	12,168
People above Poverty Level	28,612

Success Stories

Continental Divide Electric Cooperative

Our regional electric cooperative needed to expand their headquarters due to the creation of another division / service line – Broadband.

CDEC purchased 24 acres and relocated to the Cibola Industrial Park, becoming the main anchor tenant with a new headquarters facility, complete with warehouse and service yards.

The relocation to the Cibola Industrial Park brought fiber to the door for all future tenants – a huge upgrade from dial up internet!

Today, the new headquarters is home to 125 jobs for electricity service and broadband fiber to the door.



Since 1946

August 2019

1 – Gigabit internet service through Red Bolt Broadband is introduced, making Grants and Milan, New Mexico “gigabit” cities.

Investment:
\$17M

Jobs Created:
25 new jobs

Industry:
Energy &
Telecommunications

Location:
Grants, NM

Facility Size:
24,000SF (Main Bldg);
2 additional bldgs

Highlight:
Member-Owned
Cooperative



December 2021



March 2023



Opportunities

Discover your next expansion opportunity

MILAN INDUSTRIAL PARK



- 900-acre, rail served industrial park
- 120,000 SF spec building design – preliminary spec building design plans available; facilitated permitting process
- Target sectors
 - **Transportation** – Distribution, Logistics, Cold Storage, Transload, Inland Port/Customs
 - **Forest Restoration**
 - **Value-Added Agriculture**
 - **Healthcare**
 - **Outdoor Recreation**



Questions? Let's talk!



Eileen Chavez Yarborough
**Cibola Communities Economic
Development Foundation**
Executive Director
eileen@cibolaedc.com | (505)658-2911

Connect with us  cibolaedc.com

 <https://www.linkedin.com/in/eileen-c-yarborough-0515b017/>

 <https://www.facebook.com/CCEDF>