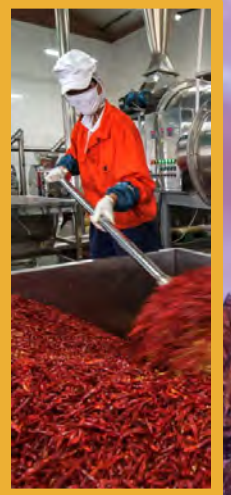
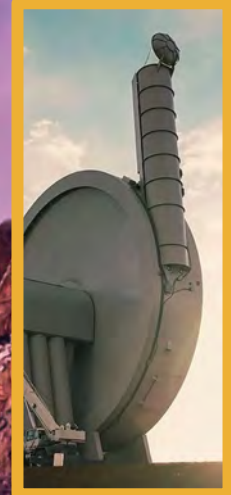


# NM BORDERPLEX Community Overview

LAS CRUCES • DOÑA ANA COUNTY



POWERED BY **MVEDA**

## New Mexico Familiarization Tour

Wednesday, May 1-3, 2024 | Hotel Encanto | Las Cruces, NM



**Bret Buchanan**  
Mesilla Valley Economic  
Development Alliance (MVEDA)  
Business Development Specialist



# Overview

The Borderplex Region



**3 STATES**  
**2 COUNTRIES**  
**1 SOLUTION**

- **Regional Population: 2,700,000**
  - Annual Growth Rate: 0.5%
  - Median Household Income: \$53,324
- **Utilities**
  - Electric: El Paso Electric Company
  - Gas: New Mexico Gas Company, City of Las Cruces Utilities
  - Water – Camino Real Regional Utility Authority, City of Las Cruces Utilities
- **Transportation Infrastructure**
  - Highway(s): Interstate's 10 & 25
  - Rail: Union Pacific & BNSF
  - Airport(s): Las Cruces Int. (LRU), Doña Ana County Jetport (KDNA), El Paso Int. (ELP)



# Top Industries

## Major Employers and Assets

- **Manufacturing / Advanced Manufacturing**
  - 5<sup>th</sup> Largest Manufacturing Region In North America
- **Logistics, Warehousing, Distribution**
  - Strong Logistical Assets; Class I Rail, Interstate's, Airport, Port of Entry, connectivity, etc.
- **Value Added Agriculture**
  - largest growing county in NM; Pecans, Chile, Onions.
- **Aerospace**
  - UAS Flight Test Center, Spaceport America, NASA, White Sands
- **Back office & Technical Support**
  - Secondary Market to El Paso, Cost of Business, Young & Available Workforce
- **High Tech & Digital Media**
  - State Target Industry Alignment
- **Renewable Energy**
  - Afton Solar Energy Zone (77,000+ acres suitable for utility production of solar energy)



Telehealth /  
Software Development

770 Employees



Prefabricated Commercial Fabric  
Structures

450 Employees



Cheese Manufacturing  
400 Employees



Prepackaged Protein Supplier  
1,300 FTE's Announced



Solar Component Manufacturer  
350 FTE's Announced



# Workforce

About our workforce



REGION OF  
**2.7**  
POPULATION **MILLION**

**SEVEN**  
REGIONAL  
UNIVERSITIES

**150**  
**THOUSAND**  
POST SECONDARY  
STUDENTS

**5<sup>TH</sup>**  
**LARGEST**  
MANUFACTURING REGION  
IN NORTH AMERICA

**Industrial  
Labor Force**  
**569,000**

**295**  
**THOUSAND**  
MANUFACTURING  
LABOR FORCE

**ADVANCED  
MANUFACTURING  
ANNUAL  
STUDENT  
PIPELINE**  
**11k+**

**27K+**  
**ADVANCED  
MANUFACTURING  
WORKFORCE**

**NM BORDERPLEX**  
automation **Up**





# Success Stories

Past 5 Years in the NMBorderplex

**Over the past 5 years**, the NMBorderplex has seen tremendous growth throughout the region. This is due on an account of on shoring & near shoring trends but primarily thanks to our existing workforce, strong logistical assets, available industrial sites, and supportive business environment.

**45** Completed Projects

**5,000** Jobs Created

**\$17.75** in Average Wages

**3.5 Million** Total Square Footage

**\$1.0 Billion** in new investment

01



The company chose New Mexico over Texas for a new manufacturing site because of the collaborative business climate, incentives and the proximity to the fast-growing wind and solar installations in the western United States, the news release said.

02



Las Cruces is not only a welcoming community, but it is a strategic location for the distribution of cheese across the country, We are close to the border as well as dairies. And it's a natural bridge to both California and Wisconsin.

03



Santa Teresa, N.M. is the perfect location for Louisiana Pepper to thrive. It is a rail-served industrial park with an overweight truck zone that can support our supply chain out of Mexico, Zach Foster, chief financial officer for Louisiana Pepper Exchange

04



The team At MVEDA was instrumental in helping us understand the tax and Incentive landscape of New Mexico and Doña Ana County, providing us valuable information. MVEDA was our initial contact for connecting us to the County for Establishing the FTZ.

05



The State of New Mexico's focus on the border region for the past few years and their infrastructure investments are making the area an attractive spot for industrial development," "The joint efforts on the Santa Teresa border crossing between the State of New Mexico and the State of Chihuahua are also moving the needle....

05



Hota has picked Santa Teresa as its next manufacturing site based on various comparison analyses among the states on the US-Mexico border. Its location makes it a one-day trucking distance to many of our main customers. Transportation infrastructure is in place to support the logistics of our goods and services. Utility supply is stable and relatively inexpensive...

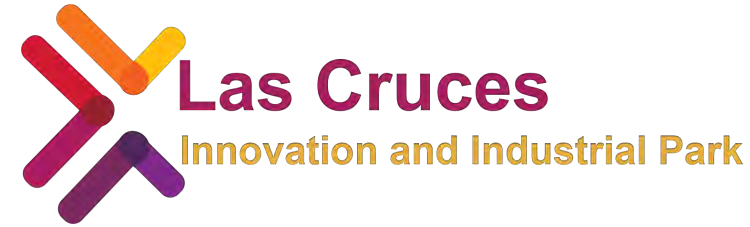


# Opportunities

*Discover your next expansion opportunity*

## Las Cruces Innovation and Industrial Park (LCIIP)

- 1,800 Total Acres: 486.5 Certified – development ready
- Regions only certified industrial park
- Utilities Curbside
- Located on Interstate – 10
- Adjacent to the Las Cruces International Airport
- FTZ / Opportunity Zone
- Perfectly suitable for Manufacturing, Logistics, V.A.A., and Aerospace Operations



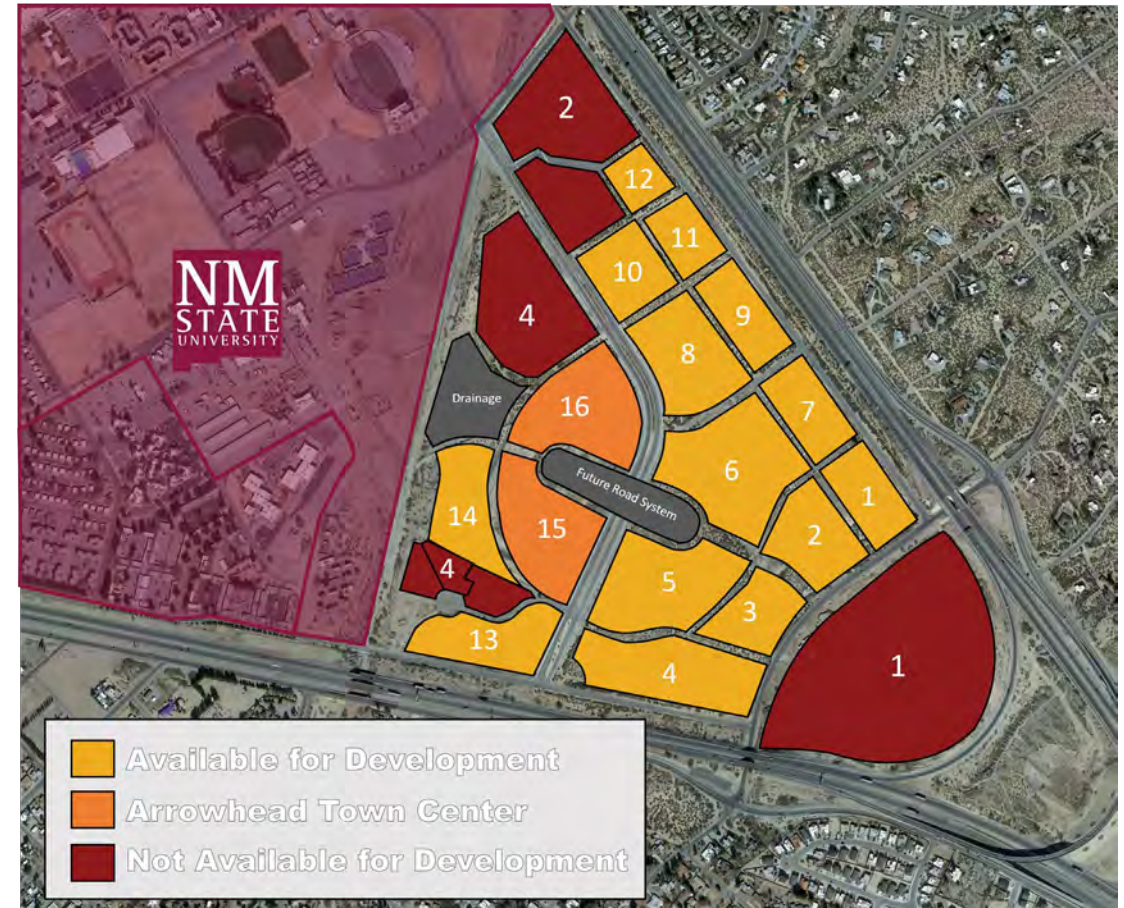


# Opportunities

*Discover your next expansion opportunity*

## Arrowhead Center at New Mexico State University

- 200 Developable Acres
- Support Available through NMSU
- Utilities within Park
- Due Diligence complete on most parcels
- Created to promote entrepreneurship and innovation, creating economic opportunity.
- Partner with NMSU & Arrowhead in research, tech commercialization, and growing regional clusters in Life Sciences, Aerospace, Agri-Biz, Digital Media, and more.
- Opportunity Zone, New Market Tax Credits, EB-5 Financing, & others.





# Opportunities

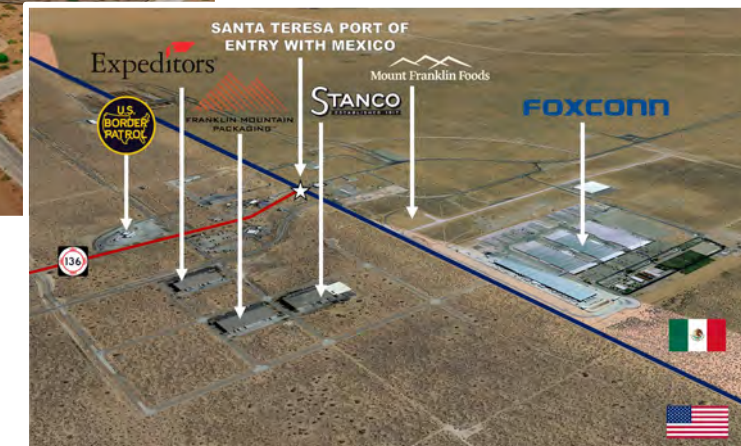
Discover your next expansion opportunity

## Santa Teresa Advantages

- One of the Largest and Newest Industrial Areas in all of NM.
- 18,000 Acre, master planned industrial area.
- FTZ / Opportunity Zone

## Santa Teresa Assets

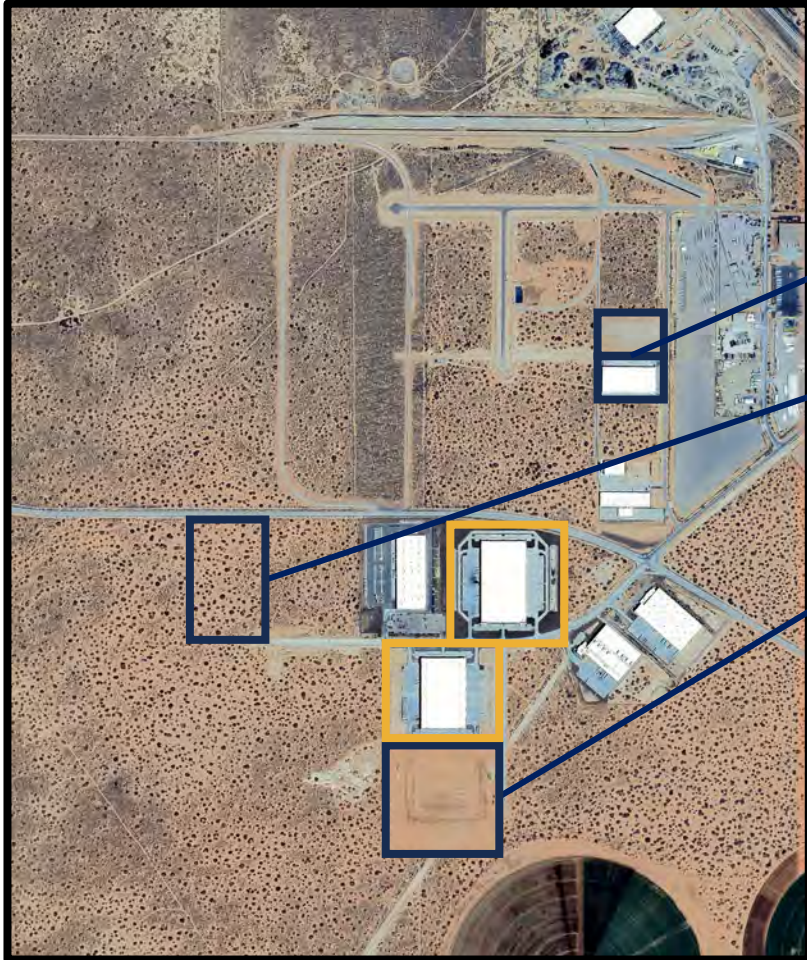
- 12 Mile Overweight Zone
- Direct access to the Santa Teresa Port of Entry
- Access to Union Pacific Intermodal Facility, rail served parcels
- 12 miles from Interstate – 10
- Adjacent to the Doña Ana County Int. Jetport
  - Planned infrastructure improvements: new cross runway, more aircraft maintenance hangers, upgraded & extended runways, new apron space, air cargo/cold storage facilities.





# Opportunities

*Santa Teresa Spec Development*



## **Abyacsa Development Co.**

- Twin spec facilities – 135,000 SF available today.
- 135,000 SF planned for construction

## **Blue Road Investments:**

- 220,895 SF State-of-the-art industrial building.
- 425,368 SF Cross Dock Distribution Center
- Master Plan includes additional ~5 Million SF of Space





# Questions? Let's talk!



**Bret Buchanan**

**MVEDA**

*Business Development Specialist*  
Bret@mveda.com | (575) 649-8872

Connect with us  [NMBorderplex.com](https://nmborderplex.com)

